



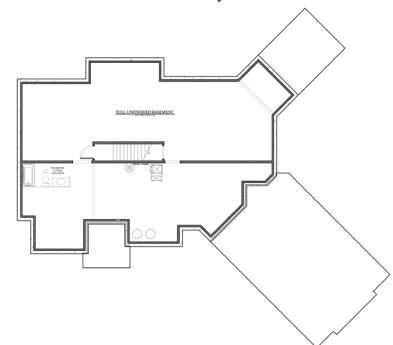
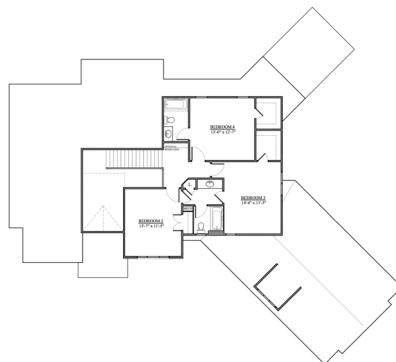
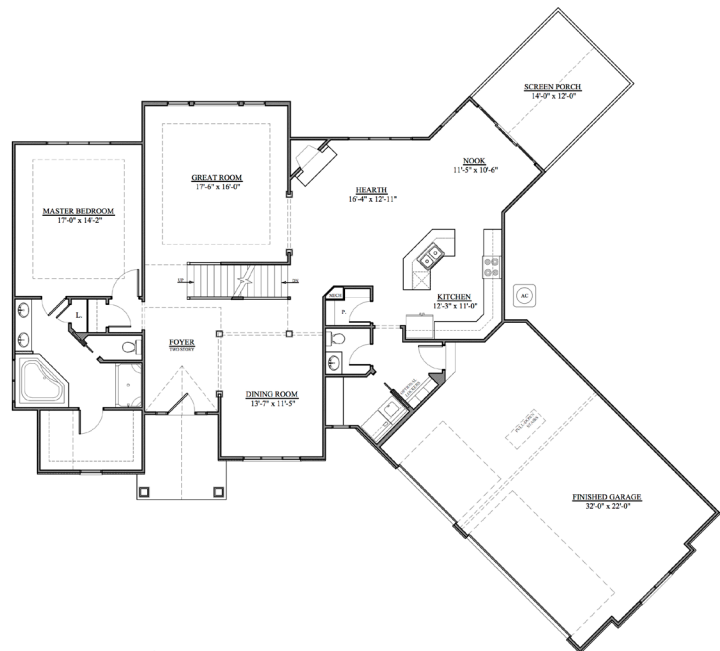
Orchardbrook

2706 square feet

1st Floor	1899 sq. ft.
2nd Floor	807 sq. ft.
Basement	1899 sq. ft.
Garage	725 sq. ft.
House Width	79' 0"
Bedrooms	4
Bathrooms	3.5

Floor Plan Features:

- Open living concept
- Screened porch
- 2-Story vaulted foyer



Granite Ridge Builders